

## Violoncello 2

## Concerto per 2 Violoncelli ed Archi

Edito secondo il manoscritto

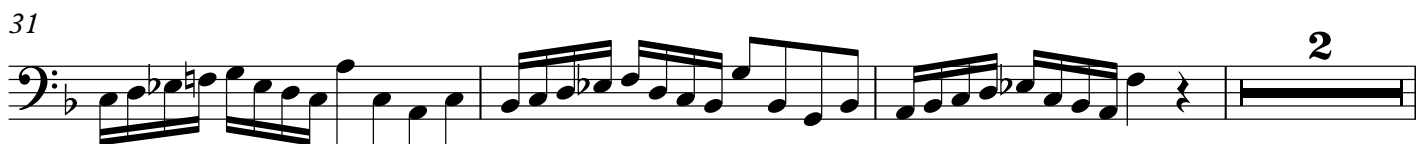
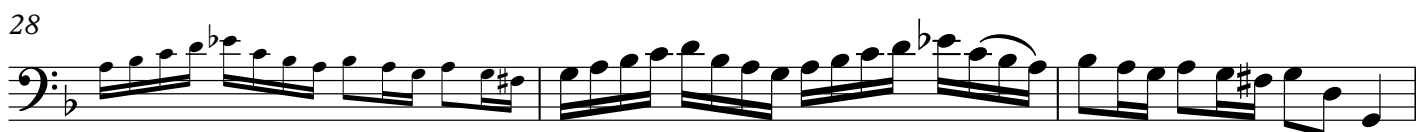
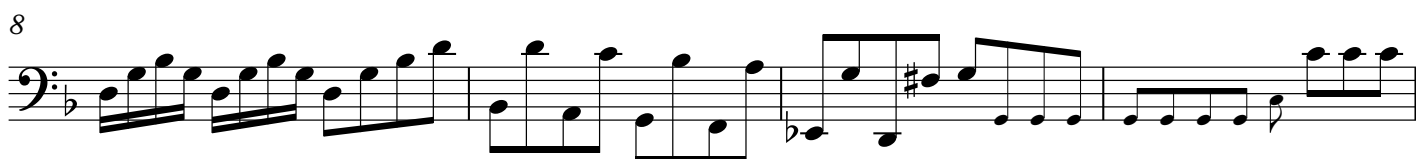
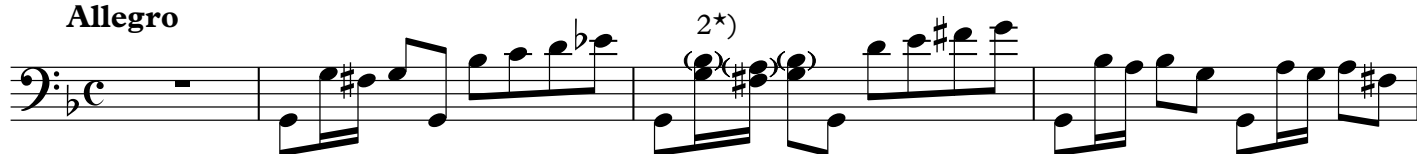
in Sol minore RV 531

da Orfeo Mandozzi

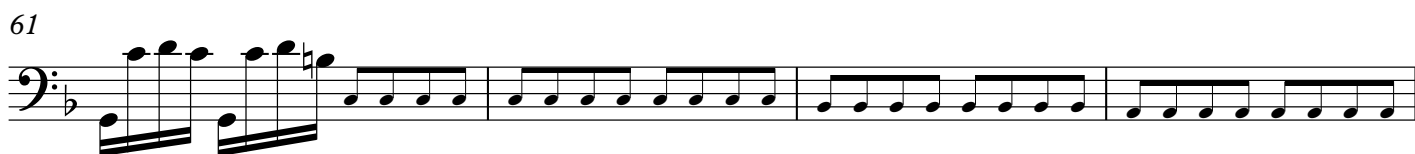
Minusio Settembre 2013

ANTONIO VIVALDI

(1678-1741)

**Allegro**

2\*) Original: g-f#-g. However to continue the imitation it is recommended to play bb-a-bb.





Largo

Musical score for Violoncello 2, Largo section, measures 1-12. The score is written in bass clef with a key signature of one flat (B-flat) and a time signature of 3/4. It features several trills (tr) and a repeat sign at measure 4. The tempo is marked 'Largo'.

Allegro

Musical score for Violoncello 2, Allegro section, measures 13-24. The score is written in bass clef with a key signature of one flat (B-flat) and a time signature of 3/4. It features a first violin part (Vc.1) starting at measure 13 and a double bar line with a '2' at the end of measure 24. The tempo is marked 'Allegro'.



74



Musical notation for measures 74-79, bass clef, key signature of one flat. The passage consists of six measures of eighth-note patterns.

80



Musical notation for measures 80-85, bass clef, key signature of one flat. The passage consists of six measures of eighth-note patterns.

86



Musical notation for measures 86-90, bass clef, key signature of one flat. The passage consists of five measures, including a triplet of eighth notes.

91



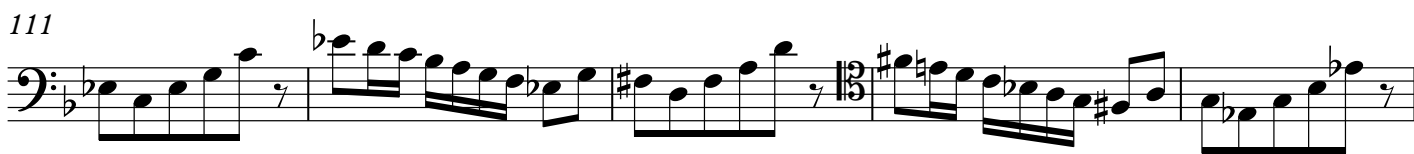
Musical notation for measures 91-95, bass clef, key signature of one flat. The passage consists of five measures of eighth-note patterns.

96



Musical notation for measures 96-105, bass clef, key signature of one flat. The passage consists of ten measures, including a triplet of eighth notes and a measure with a '9' above it.

111



Musical notation for measures 111-115, bass clef, key signature of one flat. The passage consists of five measures, including a triplet of eighth notes and a measure with a '9' above it.

116



Musical notation for measures 116-119, bass clef, key signature of one flat. The passage consists of four measures, including a triplet of eighth notes.

120



Musical notation for measures 120-124, bass clef, key signature of one flat. The passage consists of five measures of eighth-note patterns.

125



Musical notation for measures 125-129, bass clef, key signature of one flat. The passage consists of five measures, ending with a fermata.